



Power of Desire



**SOMANY**

Somany Ceramics Limited : Noida: F-36, Sector-6; Ph.: 0120-4627900.  
Ahmedabad: Office no. 7-14, 4th Floor, Aggarwal Mall, Opp. Sola Bhagwat Vidyapeeth, S.G. Road, Sola, Ph.: 079-66042500 to 599  
Registered office: 2, Red Cross Place, Kolkata - 700001; Ph.(033) 22487406/5913  
www.somanyceramics.com | e-mail marketing@somanyceramics.com

Toll Free No. 1800-103-0004 (Timing-10:00am to 6:30pm; Mon-Fri)



Visit us at:  
www.somanyceramics.com



Find us at:  
www.facebook.com/SomanyCeramic



Find us at:  
www.twitter.com/SomanyCeramic



Find us at:  
www.instagram.com/SomanyCeramics



CERAMIC / CAT / OCTOBER 2022

*Ceramisa*

**SOMANY**  
Tiles | Bathware

**ZAMEEN SE JUDEY**

**NEW  
ARRIVAL**

**DIGITAL WALL  
TILES**

COLLECTION

300x450mm | 300x300mm

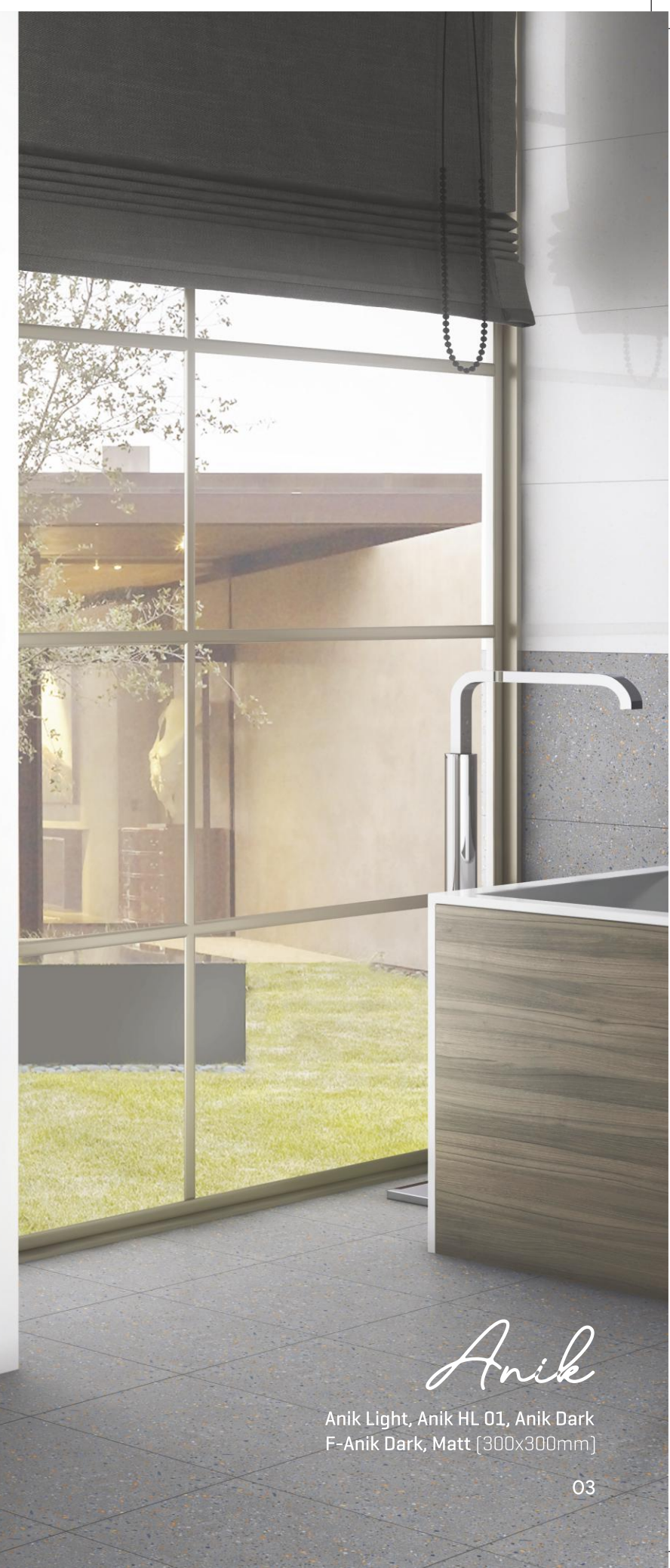
**PRODUCT LAUNCH**

2022

**ORION  
SERIES**



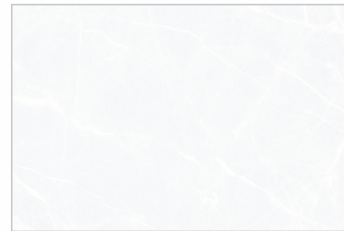
PLANT : ANDHRA PRADESH – FOR SOUTH



Anik

Anik Light, Anik HL 01, Anik Dark  
F-Anik Dark, Matt [300x300mm]

Aaren



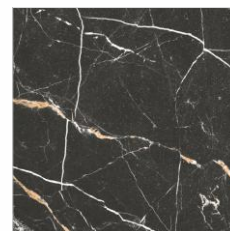
V4 Aaren Light, Glossy  
300x450mm



V1 Aaren HL 01, Glossy  
300x450mm

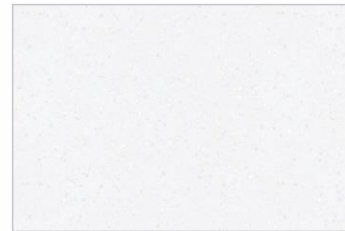


V4 Aaren Dark, Glossy  
300x450mm

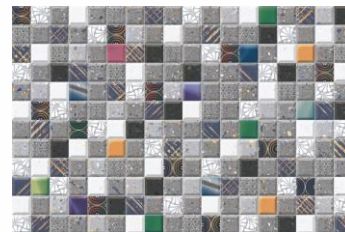


F-Aaren Dark, Matt  
300x300mm

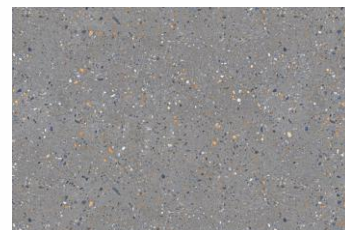
Anik



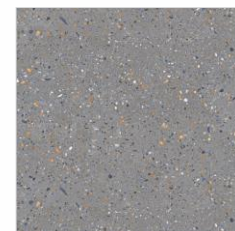
V2 Anik Light, Glossy  
300x450mm



V1 Anik HL 01, Glossy  
300x450mm

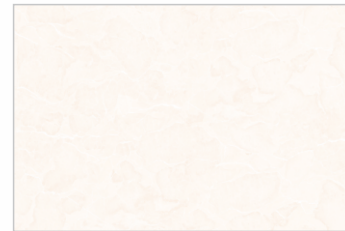


V2 Anik Dark, Glossy  
300x450mm



F-Anik Dark, Matt  
300x300mm

Baran



V2 Baran Light, Glossy  
300x450mm



V1 Baran HL 01, Glossy  
300x450mm



V2 Baran Dark, Glossy  
300x450mm

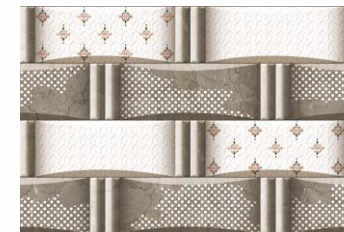


F-Baran Dark, Matt  
300x300mm

Darian



V2 Darian Light, Glossy  
300x450mm



V1 Darian HL 01, Glossy  
300x450mm



V2 Darian Dark, Glossy  
300x450mm



F-Darian Dark, Matt  
300x300mm

Divya



V1 Divya Light, Glossy  
300x450mm

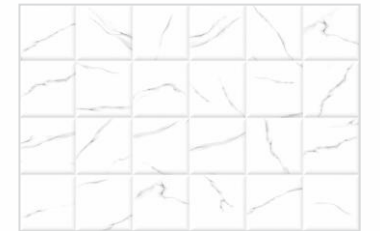


V1 Divya HL 01, Glossy  
300x450mm

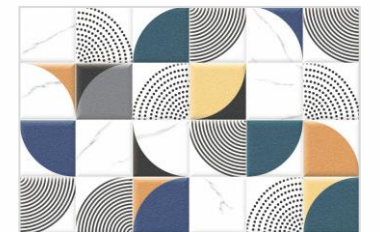


V1 Divya HL 02, Glossy  
300x450mm

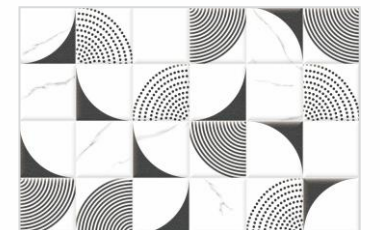
Eiko



V1 Eiko Light, Glossy  
300x450mm



V1 Eiko HL 01, Glossy  
300x450mm



V1 Eiko HL 02, Glossy  
300x450mm



F-Leyan Light, Matt  
300x300mm

Enoa



V2 Enoa Light, Glossy  
300x450mm



V1 Enoa HL 01, Glossy  
300x450mm

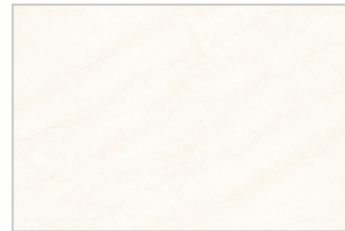


V2 Enoa Dark, Glossy  
300x450mm



F-Enoa Dark, Matt  
300x300mm

Gerit



V3 Gerit Light, Glossy  
300x450mm



V1 Gerit HL 01, Glossy  
300x450mm

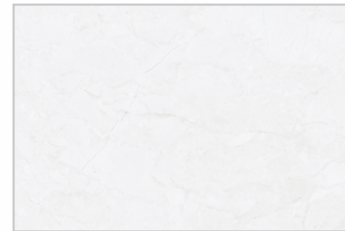


V3 Gerit Dark, Glossy  
300x450mm

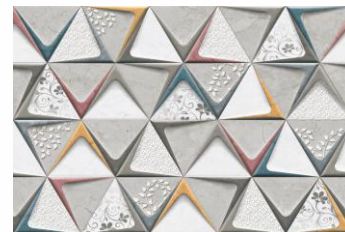


F-Gerit Dark, Matt  
300x300mm

Janick



V2 Janick Light, Glossy  
300x450mm



V1 Janick HL 01, Glossy  
300x450mm

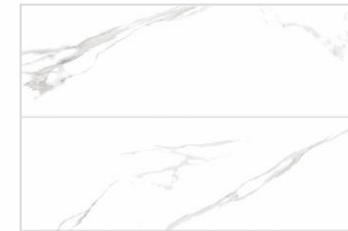


V2 Janick Dark, Glossy  
300x450mm



F-Janick Dark, Matt  
300x300mm

Karo



V2 Karo Light, Glossy  
300x450mm

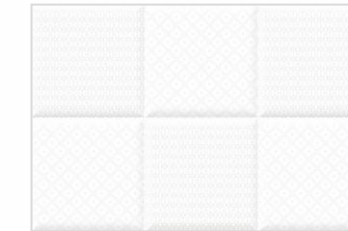


V2 Karo HL 01-A, Glossy  
300x450mm



V2 Karo HL 01-B, Glossy  
300x450mm

Kiano



V1 Kiano Light, Glossy  
300x450mm



V2 Kiano HL 01-A, Glossy  
300x450mm



V2 Kiano HL 01-B, Glossy  
300x450mm

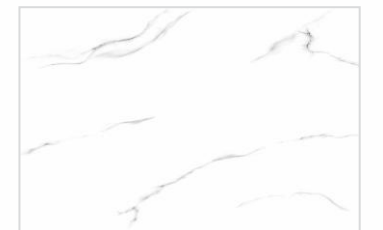
Leyan



V3 Leyan Light, Glossy  
300x450mm



V1 Leyan HL 01, Glossy  
300x450mm



V3 Leyan Light, Glossy  
300x450mm



F-Leyan Light, Matt  
300x300mm

Loren



V2 Loren Light, Glossy  
300x450mm



V1 Loren HL 01, Glossy  
300x450mm



V2 Loren Dark, Glossy  
300x450mm



F-Loren Dark, Matt  
300x300mm

Maiko



V2 Maiko Light, Glossy  
300x450mm



V1 Maiko HL 01, Glossy  
300x450mm



V2 Maiko HL 02, Glossy  
300x450mm



V2 Maiko Dark, Glossy  
300x450mm

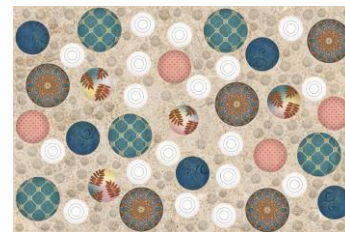


F-Gerit Dark, Matt  
300x300mm

Misha



V2 Misha Light, Glossy  
300x450mm



V1 Misha HL 01, Glossy  
300x450mm

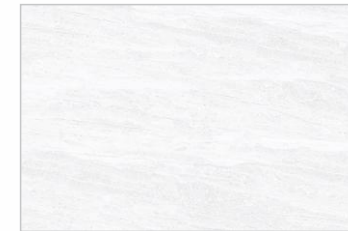


V2 Misha Dark, Glossy  
300x450mm



F-Misha Dark, Matt  
300x300mm

Nevis



V2 Nevis Light, Glossy  
300x450mm



V1 Nevis HL 01, Glossy  
300x450mm



V2 Nevis Dark, Glossy  
300x450mm



F-Nevis Dark, Matt  
300x300mm

Palmer



V1 Palmer Light, Glossy  
300x450mm



V1 Palmer HL 01, Glossy  
300x450mm

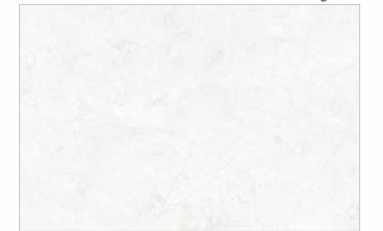


V1 Palmer Dark, Glossy  
300x450mm



F-Palmer Dark, Matt  
300x300mm

Rayn



V2 Rayn Light, Glossy  
300x450mm



V1 Rayn HL 01, Glossy  
300x450mm



V2 Rayn Dark, Glossy  
300x450mm



F-Rayn Dark, Matt  
300x300mm

Skylor



V2 Skylor Light, Glossy  
300x450mm



V1 Skylor HL 01, Glossy  
300x450mm

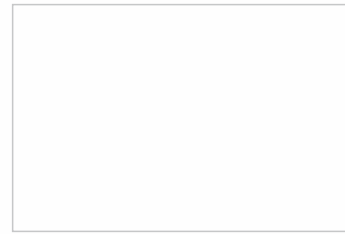


V2 Skylor Dark, Glossy  
300x450mm



F-Skylor Dark, Matt  
300x300mm

White



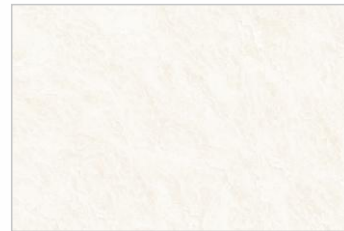
V1 White, Glossy  
300x450mm



Skylor

Skylor Light, Skylor HL 01, Skylor Dark  
F-Skylor Dark, Matt [300x300mm]

Alora



V2 Alora Light, Matt  
300x450mm



V1 Alora HL 01, Matt  
300x450mm

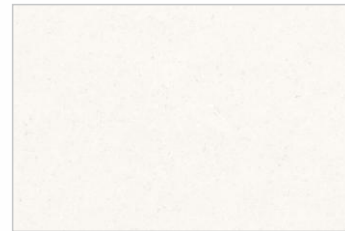


V2 Alora Dark, Matt  
300x450mm



F-Misha Dark, Matt  
300x300mm

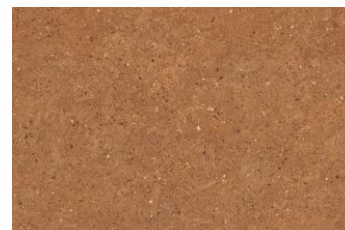
Enzo



V1 Enzo Light, Matt  
300x450mm



V1 Enzo HL 01, Matt  
300x450mm

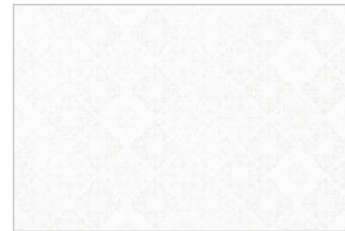


V1 Enzo Dark, Matt  
300x450mm



F-Enzo Dark, Matt  
300x300mm

Mile



V1 Mile Light, Matt  
300x450mm



V1 Mile HL 01, Matt  
300x450mm



V1 Mile HL 02, Matt  
300x450mm

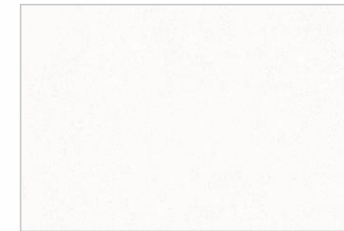


V1 Mile Dark, Matt  
300x450mm



F-Mile Dark, Matt  
300x300mm

Reine



V1 Renie Light, Matt  
300x450mm



V1 Renie HL 01, Matt  
300x450mm



V1 Renie Dark, Matt  
300x450mm



F-Renie Dark, Matt  
300x300mm

Stevie



V2 Stevie Light, Matt  
300x450mm



V1 Stevie HL 01, Matt  
300x450mm

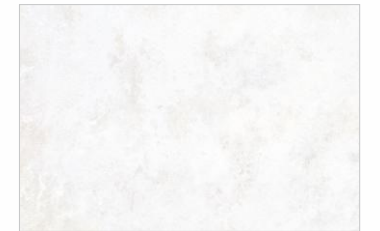


V2 Stevie Dark, Matt  
300x450mm

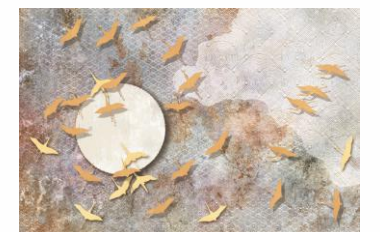


F-Stevie Dark, Matt  
300x300mm

Talis



V1 Talis Light, Matt  
300x450mm



V1 Talis HL 01, Matt  
300x450mm



V1 Talis HL 02, Matt  
300x450mm



V1 Talis Dark, Matt  
300x450mm

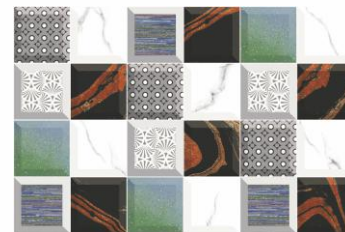


F-Talis Dark, Matt  
300x300mm

Zarin



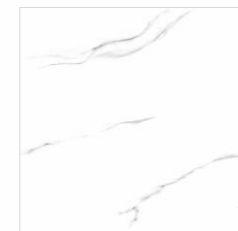
V2 Zarin Light, Matt  
300x450mm



V1 Zarin HL 01, Matt  
300x450mm



V2 Zarin Light, Matt  
300x450mm



F-Leyan Light, Matt  
300x300mm

PACKING DETAIL FOR DIGITAL WALL TILES

Nominal Size	Thickness(mm)	Average weight per carton (Kgs)	No. of tiles per carton	Coverage area per carton
300x450mm	8.0	11.0	6	0.81sq.mtr./8.72sq.ft.
300x300mm-F	8.4	11.20	9	0.81sq.mtr./8.72sq.ft.

TECHNICAL SPECIFICATION FOR DIGITAL WALL TILES

Characteristics	Requirement as per IS 15622: 2017 E ≥ 10, Group BIII	Requirements as per ISO 13006 E ≥ 10, Group BIII	Our Values	Test Method
<b>A) Dimension &amp; Surface Quality</b>				
I) Length & Width	± 0.20%	± 0.50%	± 0.1%	IS 13630 Part 1/ISO 10454-2
ii) Thickness	± 5.0%	± 10.0%	± 4.0%	
iii) Straightness of Side	± 0.15%	± 0.30%	± 0.1%	
iv) Rectangularity	± 0.20%	± 0.50%	± 0.2%	
v) Surface Flatness Max Deviation in %				
a) Center curvature related to diagonal	± 0.30%	+0.5% / -0.3%	± 0.22 %	
b) Edge curvature related to corresponding side	± 0.30%	+0.5% / -0.3%	± 0.22 %	
c) warpage related to diagonale	± 0.30%	± 0.5%	± 0.22 %	
vi) Surface Quality	Min. 95 % of tiles will be free from visible defects.	Min. 95 % of tiles will be free from visible defects.	Min. 95 % of tiles will be free from visible defects.	
<b>B) Physical Properties</b>				
i) Water Absorption	E ≥ 10 %. (when the value exceeds 20 % this shall be indicated by the manufacturer) Individual 9 percent, Min.	E ≥ 10 %. (when the value exceeds 20 % this shall be indicated by the manufacturer) Individual 9 percent, Min.	Avg. 10-20 %	IS 13630 Part 2/ISO 10545-3
ii) Modulus of Rupture [N/mm <sup>2</sup> ]	Min 15	Average Min 15	Average Min 15	IS 13630 Part 6/ISO 10545-4
iii) Breaking Strength in N	Min 600	Not Less than 600	Min 600	
iv) Scratch Hardness of surface (Mohs)	Min 3	-	Min 3	IS 13630 Part 13
v) Coefficient of linear thermal expansion from ambient temperature to 100° C	9 X 10 <sup>-6</sup> K <sup>-1</sup> max	-	8 X 10 <sup>-6</sup> K <sup>-1</sup> max	IS 13630 Part 4/ISO 10545-8
vi) Thermal Shock Resistance	10 cycle min	10 cycle min	10 cycle min	IS 13630 Part 5/ISO 10545-9
vii) Craze Resistance	4 cycle @ 7.5bar min	Manufacturer to Declared	4 Cycle @ 7.5 bar Min	IS 13630 Part 9/ISO 10545-11
<b>C) Chemical Properties</b>				
i) Stain Resistance	Min Class 1	Required	Class-1	IS 13630 Part 8 /ISO 10545-13 & ISO 10545-14
ii) Resistance to household chemicals	Min Class AA	Required	Min Class AA	
iii) Resistance to acids and alkalis (with exception of hydrofluoric acid and its compounds)	Required if agreed	Required	Min Class AA	

The reproduction of tiles in this catalogue is restricted to four color printing only and tiles are not in relative sizes, therefore customers are advised to see physical sample before placing the order. Technical Specifications for Somany Wall & Floor Tiles are applicable only for premium quality tiles. Please inspect all tiles prior to installation, company will not entertain complaints, once the tiles are laid/fixd. Complaints will not be entertained for Borders, Highlighters & Motifs.